

JAY•LOR[®]

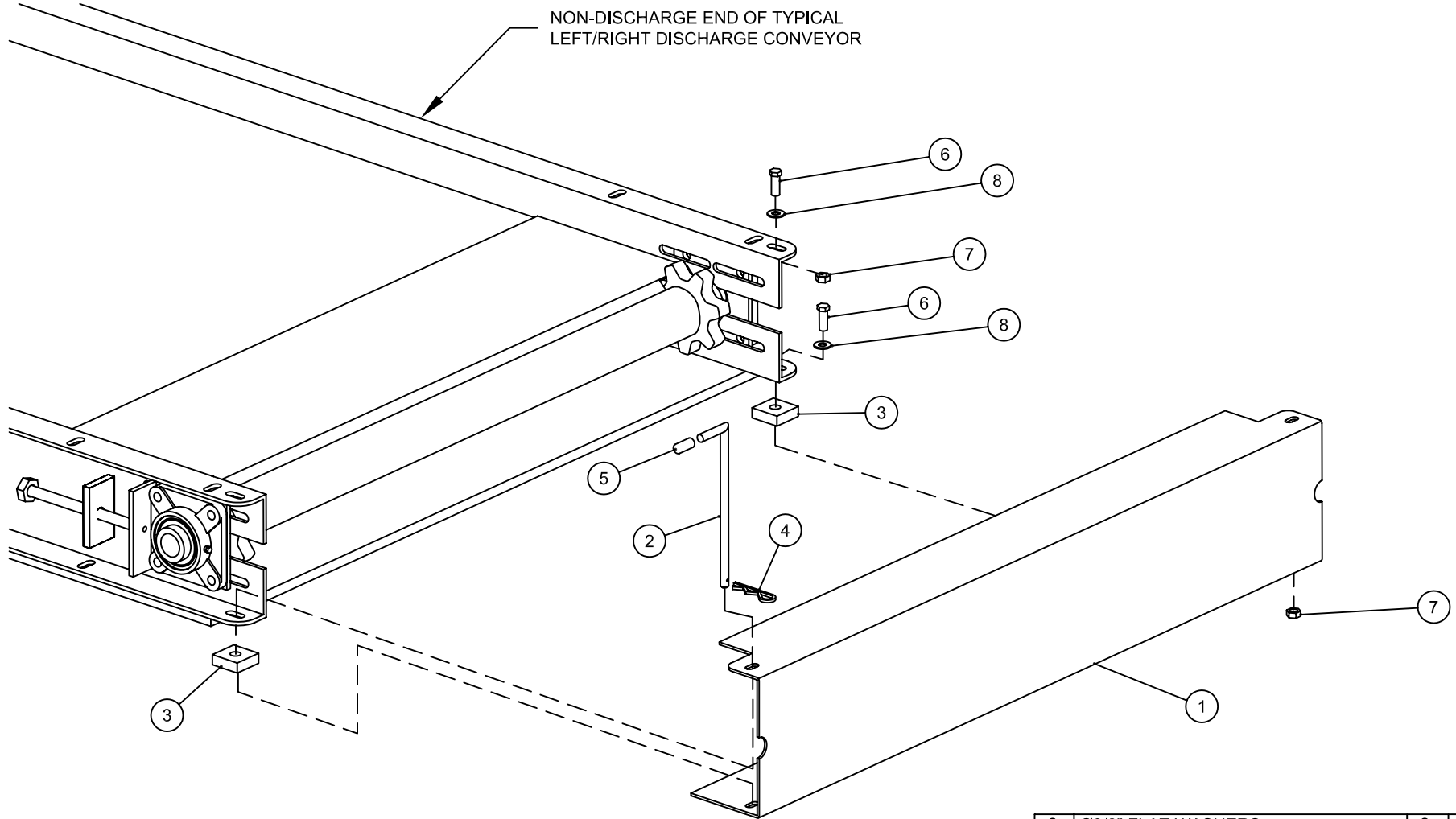
Cutter • Mixer • Feeder

11 – SHIELDS

“Putting the ‘Total’ into TMR”

JAY-LOR[®] Fabricating Inc.
RR # 2 Orton, Ontario, Canada, L0N 1N0 Tel: (519) 787-8058 Fax: (519) 787-7053

To Print this Section, Click Here



⊖# - DENOTES INDIVIDUAL PART
 ⊖# - DENOTES ASSEMBLY/SUB-ASSEMBLY

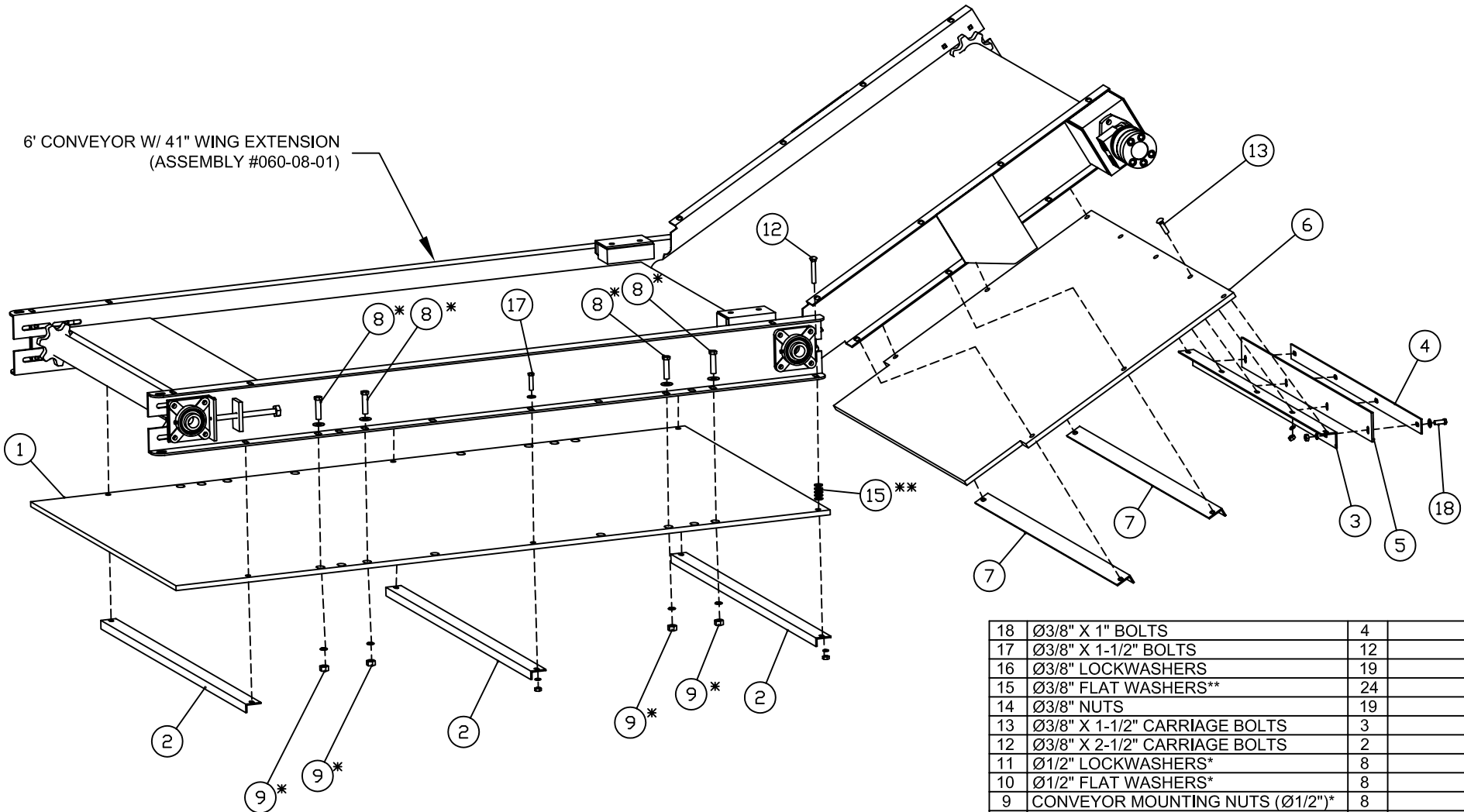
8	Ø3/8" FLAT WASHERS	2	
7	Ø3/8" HINGE LOCKNUTS	2	
6	Ø3/8" X 1" HINGE BOLTS	2	
5	CONVEYOR BOOT PIN CAP	1	150-00-01
4	HAIR PIN	1	010-01-07
3	PLASTIC SPACER BLOCK	2	110-00-35
2	CONVEYOR BOOT PIN	1	110-04-03
1	CONVEYOR BOOT SHIELD	1	110-04-01
NO.	PART DESC.	QTY	PART NO.

PARTS LIST

MODEL:	ALL APPLICABLE	
DATE:	AUG 1/03	SHEET 1 of 1
PART/ASSEMBLY NO:	110-04-00	

JAY-LOR

TITLE: CONVEYOR CLEANOUT BOOT ASSEMBLY - FOR USE ON LEFT/RIGHT DISCHARGE DIRECTION CONVEYORS



6' CONVEYOR W/ 41" WING EXTENSION
(ASSEMBLY #060-08-01)

18	Ø3/8" X 1" BOLTS	4	
17	Ø3/8" X 1-1/2" BOLTS	12	
16	Ø3/8" LOCKWASHERS	19	
15	Ø3/8" FLAT WASHERS**	24	
14	Ø3/8" NUTS	19	
13	Ø3/8" X 1-1/2" CARRIAGE BOLTS	3	
12	Ø3/8" X 2-1/2" CARRIAGE BOLTS	2	
11	Ø1/2" LOCKWASHERS*	8	
10	Ø1/2" FLAT WASHERS*	8	
9	CONVEYOR MOUNTING NUTS (Ø1/2")*	8	
8	CONVEYOR BOLTS (Ø1/2" X 2")*	8	
7	SUPPORT ANGLE	2	110-00-36
6	41" EXTENSION PLASTIC SHIELD	1	110-00-34
5	RUBBER FLAP	1	110-00-08
4	RUBBER FLAP RETAINER	1	110-00-07
3	RUBBER/PLASTIC SUPPORT ANGLE	1	110-00-05
2	SUPPORT ANGLE	3	110-00-03
1	6' CONVEYOR PLASTIC SHIELD	1	110-00-02
NO.	PART DESC.	QTY	PART NO.

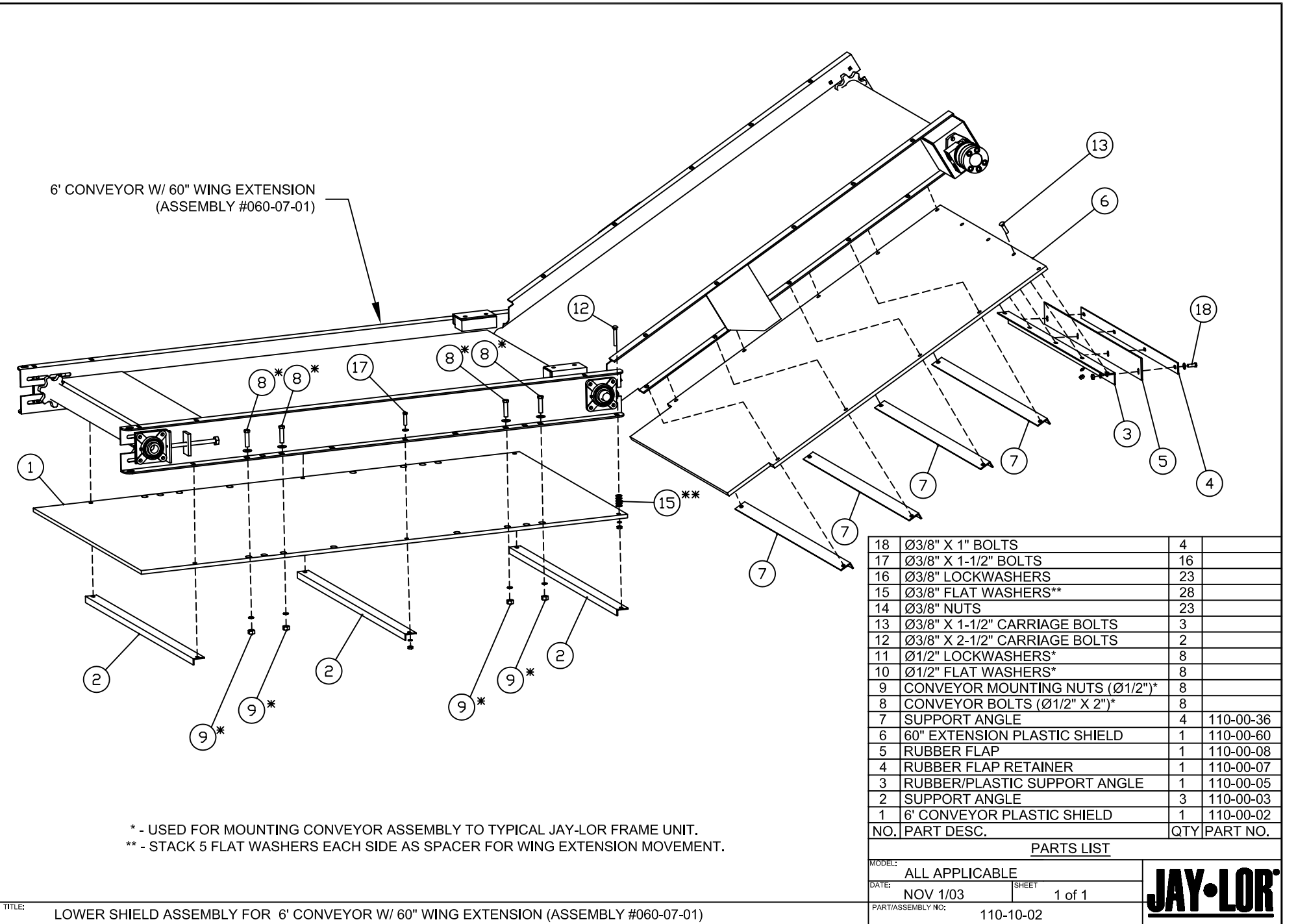
* - USED FOR MOUNTING CONVEYOR ASSEMBLY TO TYPICAL JAY-LOR FRAME UNIT.
** - STACK 5 FLAT WASHERS EACH SIDE AS SPACER FOR WING EXTENSION MOVEMENT.

PARTS LIST

MODEL:	ALL APPLICABLE	
DATE:	NOV 1/03	SHEET 1 of 1
PART/ASSEMBLY NO:	110-10-01	

JAY-LOR

TITLE: LOWER SHIELD ASSEMBLY FOR 6' CONVEYOR W/ 41" WING EXTENSION (ASSEMBLY #060-08-01)



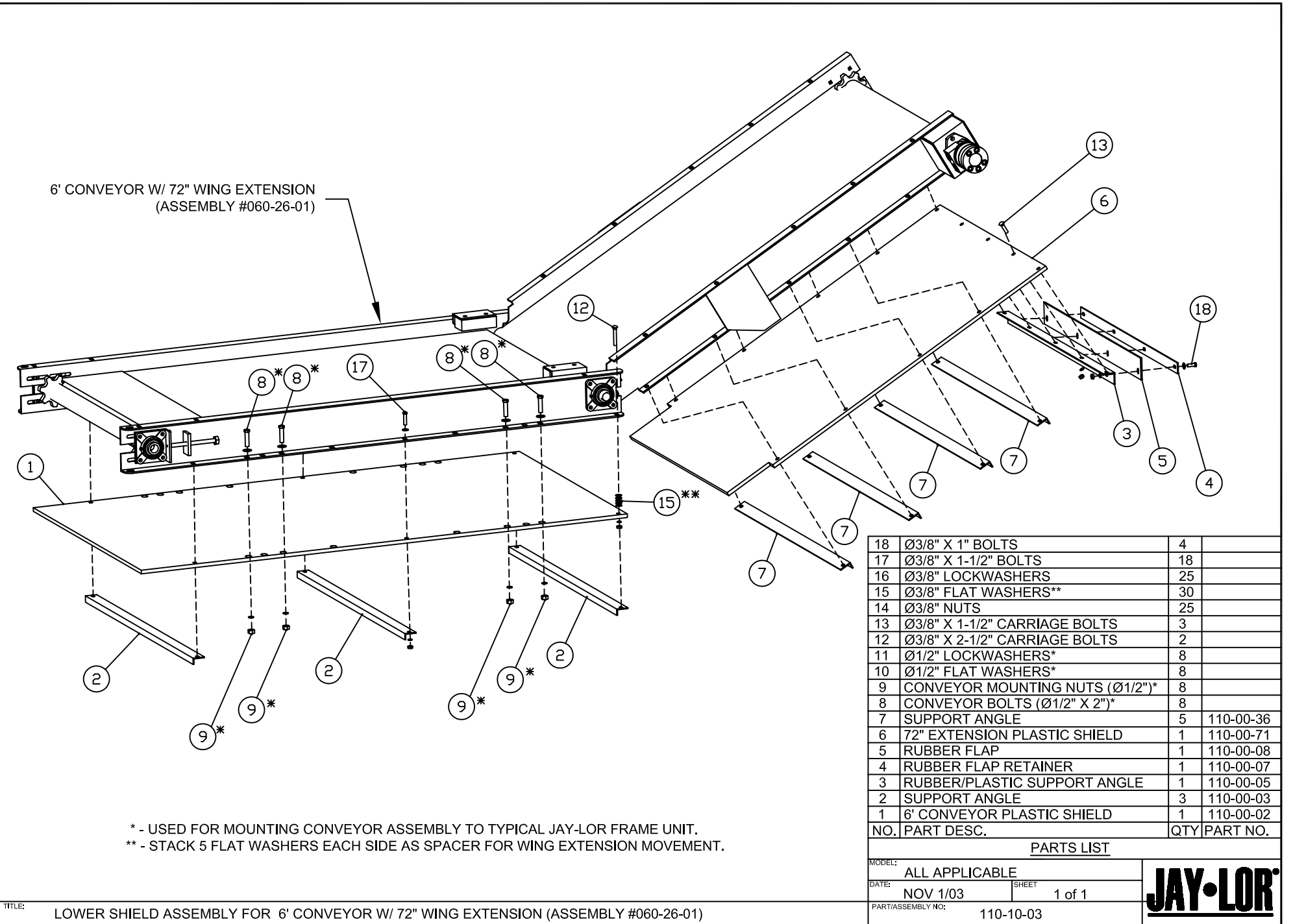
18	Ø3/8" X 1" BOLTS	4	
17	Ø3/8" X 1-1/2" BOLTS	16	
16	Ø3/8" LOCKWASHERS	23	
15	Ø3/8" FLAT WASHERS**	28	
14	Ø3/8" NUTS	23	
13	Ø3/8" X 1-1/2" CARRIAGE BOLTS	3	
12	Ø3/8" X 2-1/2" CARRIAGE BOLTS	2	
11	Ø1/2" LOCKWASHERS*	8	
10	Ø1/2" FLAT WASHERS*	8	
9	CONVEYOR MOUNTING NUTS (Ø1/2")*	8	
8	CONVEYOR BOLTS (Ø1/2" X 2")*	8	
7	SUPPORT ANGLE	4	110-00-36
6	60" EXTENSION PLASTIC SHIELD	1	110-00-60
5	RUBBER FLAP	1	110-00-08
4	RUBBER FLAP RETAINER	1	110-00-07
3	RUBBER/PLASTIC SUPPORT ANGLE	1	110-00-05
2	SUPPORT ANGLE	3	110-00-03
1	6' CONVEYOR PLASTIC SHIELD	1	110-00-02
NO.	PART DESC.	QTY	PART NO.

* - USED FOR MOUNTING CONVEYOR ASSEMBLY TO TYPICAL JAY-LOR FRAME UNIT.
 ** - STACK 5 FLAT WASHERS EACH SIDE AS SPACER FOR WING EXTENSION MOVEMENT.

PARTS LIST

MODEL:	ALL APPLICABLE	
DATE:	NOV 1/03	SHEET 1 of 1
PART/ASSEMBLY NO:	110-10-02	





18	Ø3/8" X 1" BOLTS	4	
17	Ø3/8" X 1-1/2" BOLTS	18	
16	Ø3/8" LOCKWASHERS	25	
15	Ø3/8" FLAT WASHERS**	30	
14	Ø3/8" NUTS	25	
13	Ø3/8" X 1-1/2" CARRIAGE BOLTS	3	
12	Ø3/8" X 2-1/2" CARRIAGE BOLTS	2	
11	Ø1/2" LOCKWASHERS*	8	
10	Ø1/2" FLAT WASHERS*	8	
9	CONVEYOR MOUNTING NUTS (Ø1/2")*	8	
8	CONVEYOR BOLTS (Ø1/2" X 2")*	8	
7	SUPPORT ANGLE	5	110-00-36
6	72" EXTENSION PLASTIC SHIELD	1	110-00-71
5	RUBBER FLAP	1	110-00-08
4	RUBBER FLAP RETAINER	1	110-00-07
3	RUBBER/PLASTIC SUPPORT ANGLE	1	110-00-05
2	SUPPORT ANGLE	3	110-00-03
1	6' CONVEYOR PLASTIC SHIELD	1	110-00-02
NO.	PART DESC.	QTY	PART NO.

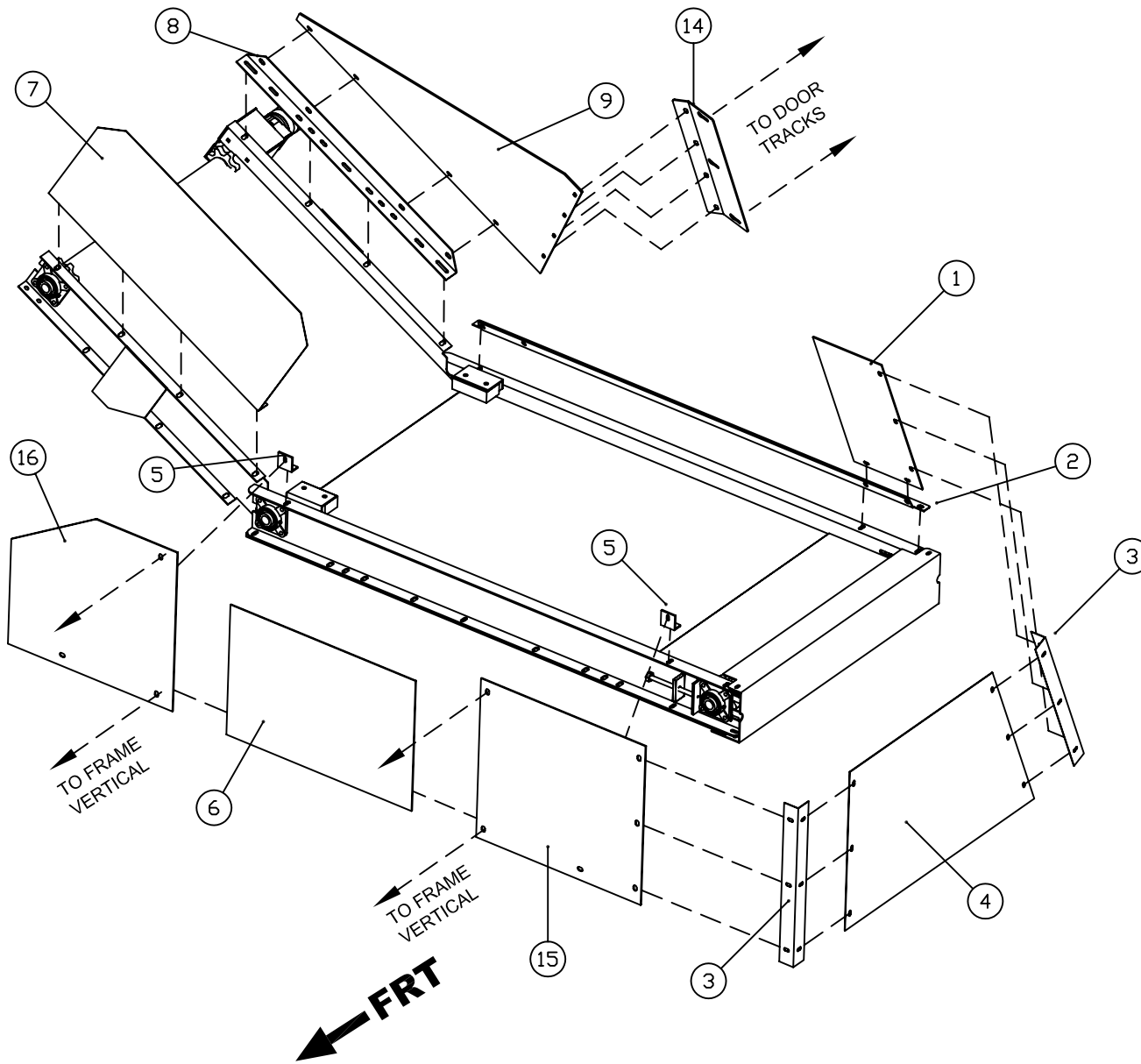
* - USED FOR MOUNTING CONVEYOR ASSEMBLY TO TYPICAL JAY-LOR FRAME UNIT.
 ** - STACK 5 FLAT WASHERS EACH SIDE AS SPACER FOR WING EXTENSION MOVEMENT.

PARTS LIST

MODEL:	ALL APPLICABLE	
DATE:	NOV 1/03	SHEET 1 of 1
PART/ASSEMBLY NO.:	110-10-03	



TITLE: LOWER SHIELD ASSEMBLY FOR 6' CONVEYOR W/ 72" WING EXTENSION (ASSEMBLY #060-26-01)



16	DISCHARGE SHIELD	1	110-00-82
15	END SHIELD	1	110-00-81
14	RUBBER SHIELD DRUM MOUNT	1	010-20-27
13	Ø3/8" NUT	32	
12	Ø3/8" LOCKWASHER	32	
11	Ø3/8" FLATWASHER	32	
10	Ø3/8"x1" BOLT	32	
9	RUBBER SHIELD	1	110-00-83
8	RUBBER SHIELD MOUNT BRACKET	1	110-00-84
7	WING SHIELD	1	110-00-22
6	FRONT SHIELD	1	110-00-80
5	SHIELD SUPPORT CLIP	2	110-00-21
4	CONVEYOR END SHIELD	1	110-00-61
3	SHIELD CORNER ANGLES	2	110-00-16
2	SHIELD MOUNT SUPPORT BRACKET	1	110-00-76
1	DRUM SIDE SHIELD	1	110-00-14
NO.	PART DESC.	QTY	PART NO.

PARTS LIST

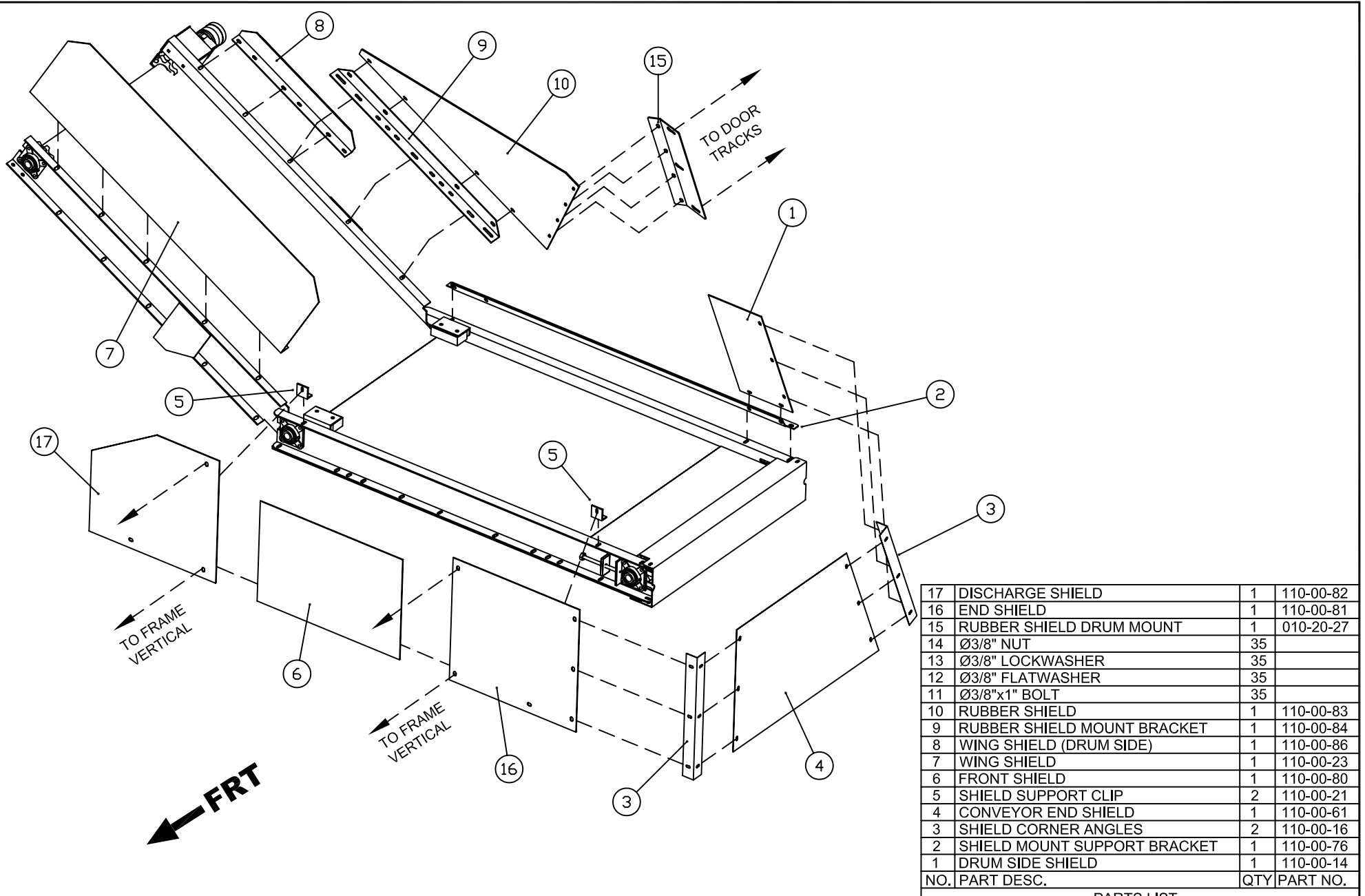
MODEL:	ALL APPLICABLE	
DATE:	AUG 1/03	SHEET 1 of 1
PART/ASSEMBLY NO:	110-11-04	



- ⊖ - DENOTES INDIVIDUAL PART
- ⊞ - DENOTES ASSEMBLY/SUB-ASSEMBLY

NOTE: RIGHT DISCHARGE ASSEMBLY SHOWN

TITLE: TOP SHIELD ASSEMBLY FOR 6' CONVEYOR W/ 41" WING EXTENSION (ASSEMBLY #060-08-01)



17	DISCHARGE SHIELD	1	110-00-82
16	END SHIELD	1	110-00-81
15	RUBBER SHIELD DRUM MOUNT	1	010-20-27
14	Ø3/8" NUT	35	
13	Ø3/8" LOCKWASHER	35	
12	Ø3/8" FLATWASHER	35	
11	Ø3/8"x1" BOLT	35	
10	RUBBER SHIELD	1	110-00-83
9	RUBBER SHIELD MOUNT BRACKET	1	110-00-84
8	WING SHIELD (DRUM SIDE)	1	110-00-86
7	WING SHIELD	1	110-00-23
6	FRONT SHIELD	1	110-00-80
5	SHIELD SUPPORT CLIP	2	110-00-21
4	CONVEYOR END SHIELD	1	110-00-61
3	SHIELD CORNER ANGLES	2	110-00-16
2	SHIELD MOUNT SUPPORT BRACKET	1	110-00-76
1	DRUM SIDE SHIELD	1	110-00-14
NO.	PART DESC.	QTY	PART NO.

PARTS LIST

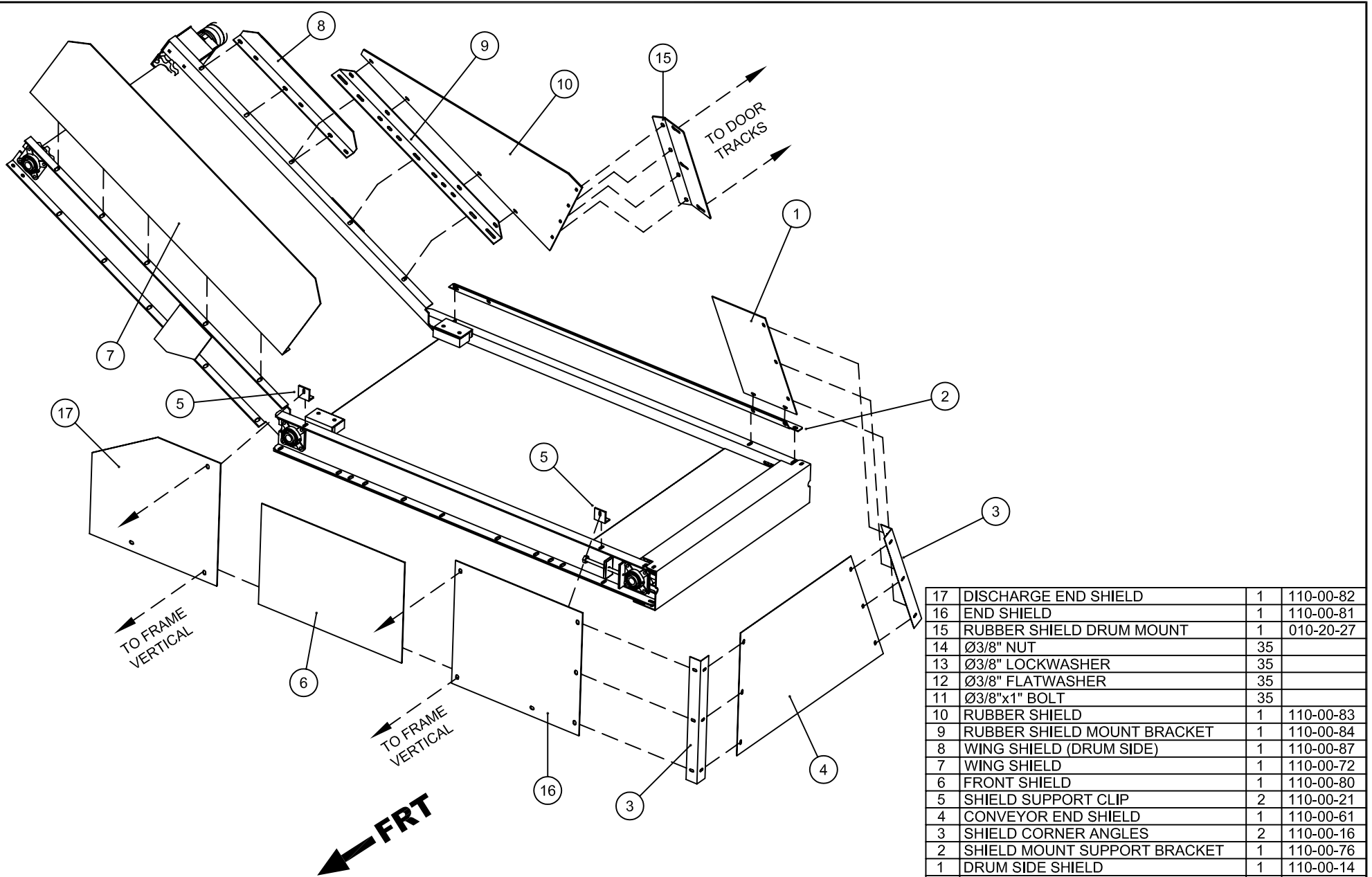
NOTE: RIGHT DISCHARGE ASSEMBLY SHOWN

⊖ - DENOTES INDIVIDUAL PART
 ⊞ - DENOTES ASSEMBLY/SUB-ASSEMBLY

MODEL:	ALL APPLICABLE	
DATE:	AUG 1/03	SHEET 1 of 1
PART/ASSEMBLY NO.:	110-11-05	



TITLE: TOP SHIELD ASSEMBLY FOR 6' CONVEYOR W/ 60" WING EXTENSION (ASSEMBLY #060-07-01)



17	DISCHARGE END SHIELD	1	110-00-82
16	END SHIELD	1	110-00-81
15	RUBBER SHIELD DRUM MOUNT	1	010-20-27
14	Ø3/8" NUT	35	
13	Ø3/8" LOCKWASHER	35	
12	Ø3/8" FLATWASHER	35	
11	Ø3/8"x1" BOLT	35	
10	RUBBER SHIELD	1	110-00-83
9	RUBBER SHIELD MOUNT BRACKET	1	110-00-84
8	WING SHIELD (DRUM SIDE)	1	110-00-87
7	WING SHIELD	1	110-00-72
6	FRONT SHIELD	1	110-00-80
5	SHIELD SUPPORT CLIP	2	110-00-21
4	CONVEYOR END SHIELD	1	110-00-61
3	SHIELD CORNER ANGLES	2	110-00-16
2	SHIELD MOUNT SUPPORT BRACKET	1	110-00-76
1	DRUM SIDE SHIELD	1	110-00-14
NO.	PART DESC.	QTY	PART NO.

NOTE: RIGHT DISCHARGE ASSEMBLY SHOWN

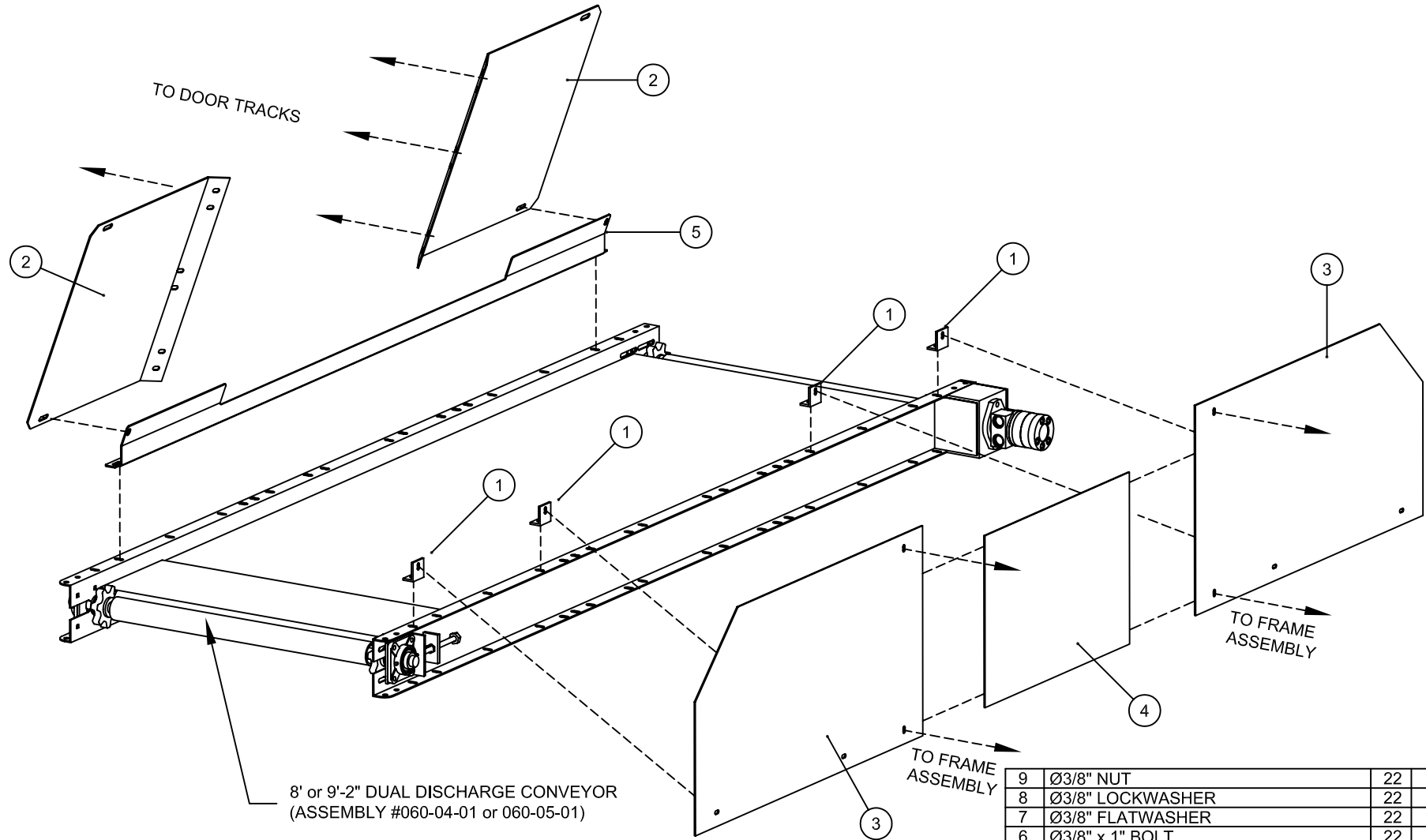
⊖# - DENOTES INDIVIDUAL PART
 ⊖# - DENOTES ASSEMBLY/SUB-ASSEMBLY

PARTS LIST

MODEL:	ALL APPLICABLE	
DATE:	AUG 1/03	SHEET 1 of 1
PART/ASSEMBLY NO.:	110-11-06	



TITLE: TOP SHIELD ASSEMBLY FOR 6' CONVEYOR W/ 72" WING EXTENSION (ASSEMBLY #060-06-01)



8' or 9'-2" DUAL DISCHARGE CONVEYOR
(ASSEMBLY #060-04-01 or 060-05-01)

FRT →

NO.	PART DESC.	QTY	PART NO.
9	Ø3/8" NUT	22	
8	Ø3/8" LOCKWASHER	22	
7	Ø3/8" FLATWASHER	22	
6	Ø3/8" x 1" BOLT	22	
5	SHIELD MOUNT	1	110-00-89
4	CENTER SHIELD	1	110-00-80
3	END SHIELD	2	110-00-40
2	DRUM SIDE SHIELD	2	110-00-88
1	SHIELD SUPPORT CLIP	4	110-00-21

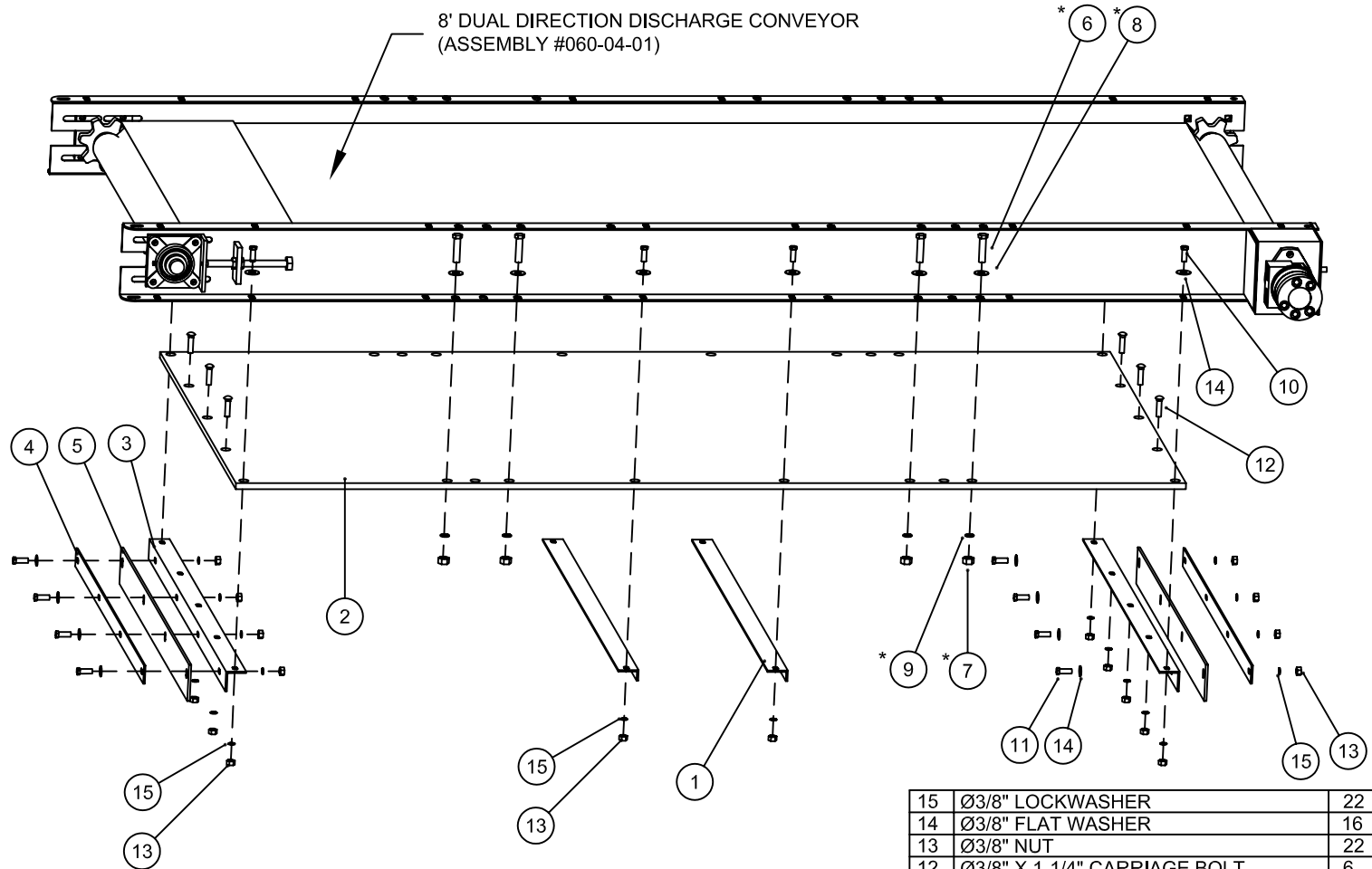
PARTS LIST

MODEL:		ALL APPLICABLE	
DATE:	AUG 1/03	SHEET	1 of 1
PART/ASSEMBLY NO:		110-12-03	



⊖# - DENOTES INDIVIDUAL PART
⊖# - DENOTES ASSEMBLY/SUB-ASSEMBLY

TITLE: TOP SHIELD ASSEMBLY FOR 8' OR 9'-2" DUAL DIRECTION DISCHARGE CONVEYOR (ASSEMBLY #060-05-01 OR 060-04-01)



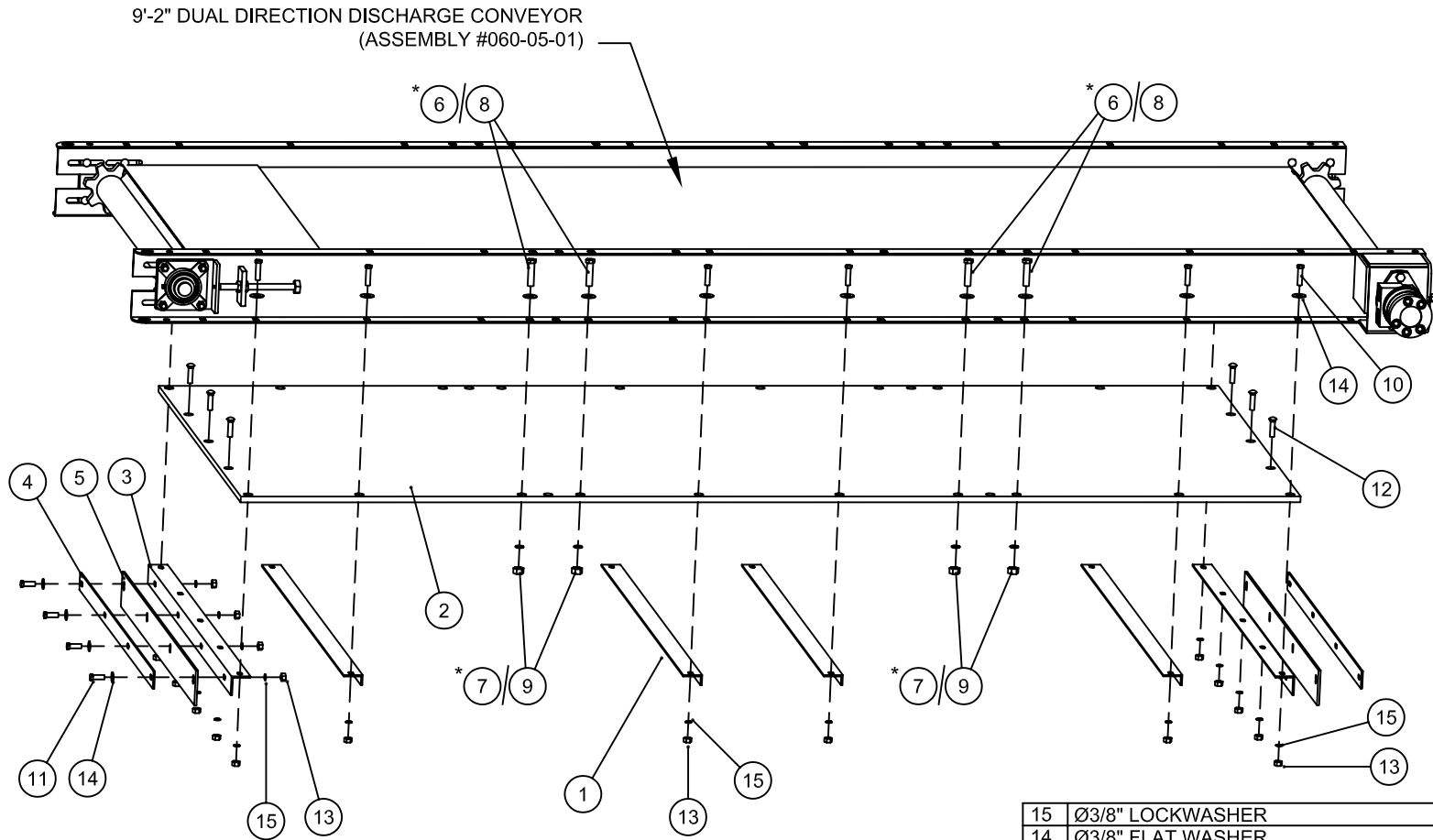
* - USED FOR MOUNTING CONVEYOR ASSEMBLY TO TYPICAL JAY-LOR FRAME UNIT.

15	Ø3/8" LOCKWASHER	22	140-00-71
14	Ø3/8" FLAT WASHER	16	140-00-66
13	Ø3/8" NUT	22	140-00-85
12	Ø3/8" X 1-1/4" CARRIAGE BOLT	6	140-00-12
11	Ø3/8" X 1" BOLT	8	140-00-12
10	Ø3/8" X 1-1/2" BOLT	8	140-00-17
9	Ø1/2" LOCKWASHER*	8	140-00-72
8	Ø1/2" FLAT WASHER*	8	140-00-67
7	CONVEYOR MOUNTING NUT (Ø1/2")*	8	140-00-76
6	CONVEYOR BOLT (Ø1/2" X 2")*	8	140-00-25
5	RUBBER FLAP	2	110-00-08
4	RUBBER FLAP RETAINER	2	110-00-07
3	RUBBER/PLASTIC SUPPORT ANGLE	2	110-00-06
2	PLASTIC SHIELD (FOR 8' CONV)	1	110-00-11
1	SHIELD SUPPORT ANGLE	2	110-00-03
NO.	PART DESC.	QTY	PART NO.

PARTS LIST

MODEL:	ALL APPLICABLE	
DATE:	NOV 1/03	SHEET 1 of 1
PART/ASSEMBLY NO.:	110-13-01	

JAY-LOR



* - USED FOR MOUNTING CONVEYOR ASSEMBLY TO TYPICAL JAY-LOR FRAME UNIT.

⊖# - DENOTES INDIVIDUAL PART
 ⊖# - DENOTES ASSEMBLY/SUB-ASSEMBLY

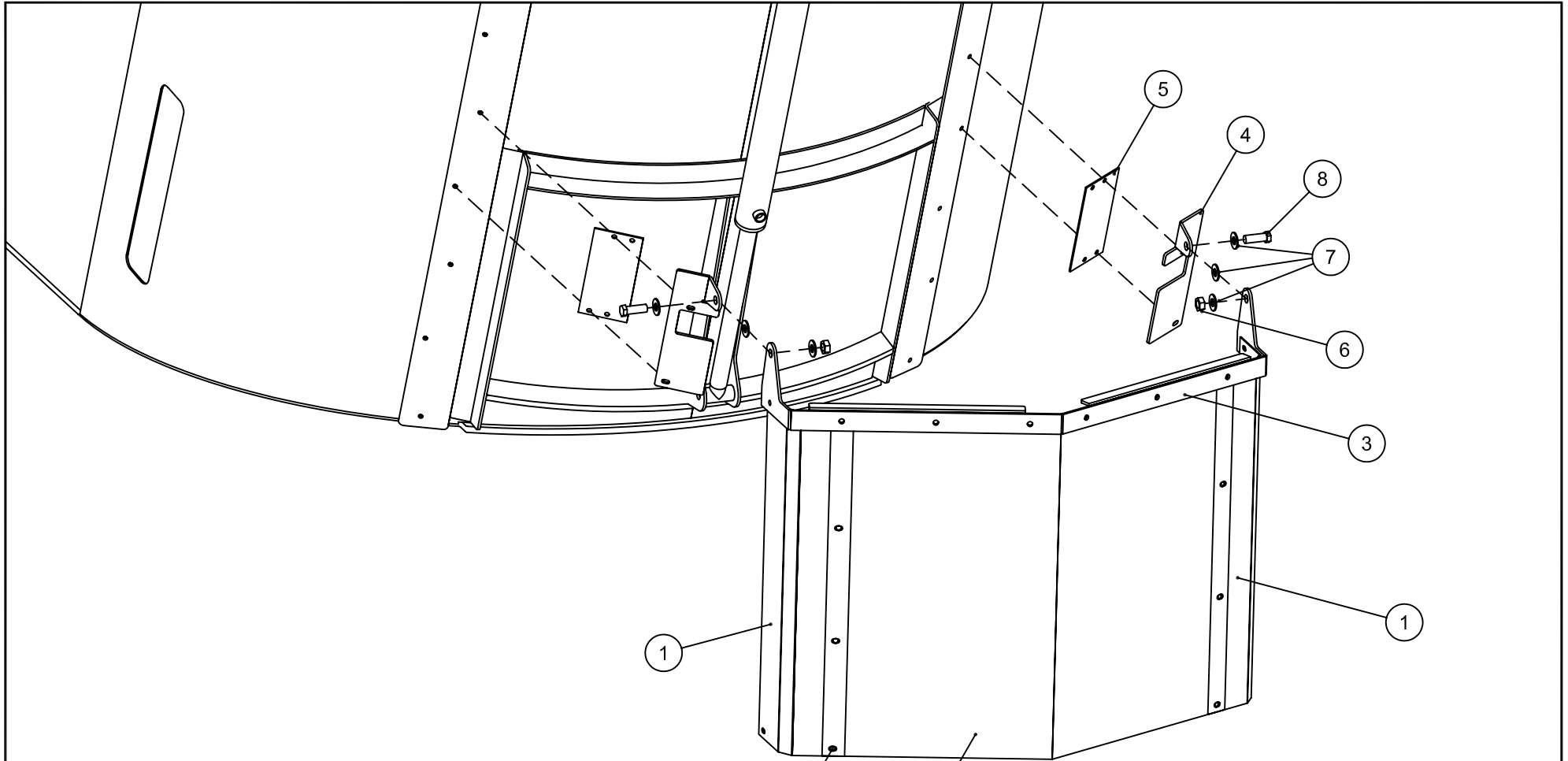
15	Ø3/8" LOCKWASHER	26	140-00-71
14	Ø3/8" FLAT WASHER	20	140-00-66
13	Ø3/8" NUT	26	140-00-85
12	Ø3/8" X 1-1/4" CARRIAGE BOLT	6	140-00-12
11	Ø3/8" X 1" BOLT	8	140-00-12
10	Ø3/8" X 1-1/2" BOLT	12	140-00-17
*	Ø1/2" LOCKWASHER*	8	140-00-72
*	Ø1/2" FLAT WASHER*	8	140-00-67
*	7 CONVEYOR MOUNTING NUT (Ø1/2")*	8	140-00-76
*	6 CONVEYOR BOLT (Ø1/2" X 2")*	8	140-00-25
5	RUBBER FLAP	2	110-00-08
4	RUBBER FLAP RETAINER	2	110-00-07
3	RUBBER/PLASTIC SUPPORT ANGLE	2	110-00-06
2	PLASTIC SHIELD (FOR 9'-2" CONV)	1	110-00-74
1	SHIELD SUPPORT ANGLE	4	110-00-03
NO.	PART DESC.	QTY	PART NO.

PARTS LIST

MODEL:	ALL APPLICABLE	
DATE:	NOV 1/03	SHEET 1 of 1
PART/ASSEMBLY NO.:	110-13-02	



TITLE: LOWER SHIELD ASSEMBLY FOR 9'-2" DUAL DISCHARGE CONVEYOR (ASSEMBLY #060-05-01)



FRT ←

12	Ø3/8" NUT	14	
11	Ø3/8" FLATWASHER	14	
10	Ø3/8" LOCKWASHER	14	
9	Ø3/8"x1" BOLT	14	
8	Ø3/4"x2-1/2" BOLT	2	
7	Ø3/4" FLATWASHER	6	
6	Ø3/4" NUT	2	
5	RUBBER BACKING	2	110-20-21
4	PIVOT MOUNT	2	110-02-19
3	SHIELD MOUNT	1	110-02-05
2	RUBBER SHIELD	1	110-02-22
1	SHIELD CORNER SUPPORT	2	110-02-14
NO.	PART DESC.	QTY	PART NO.

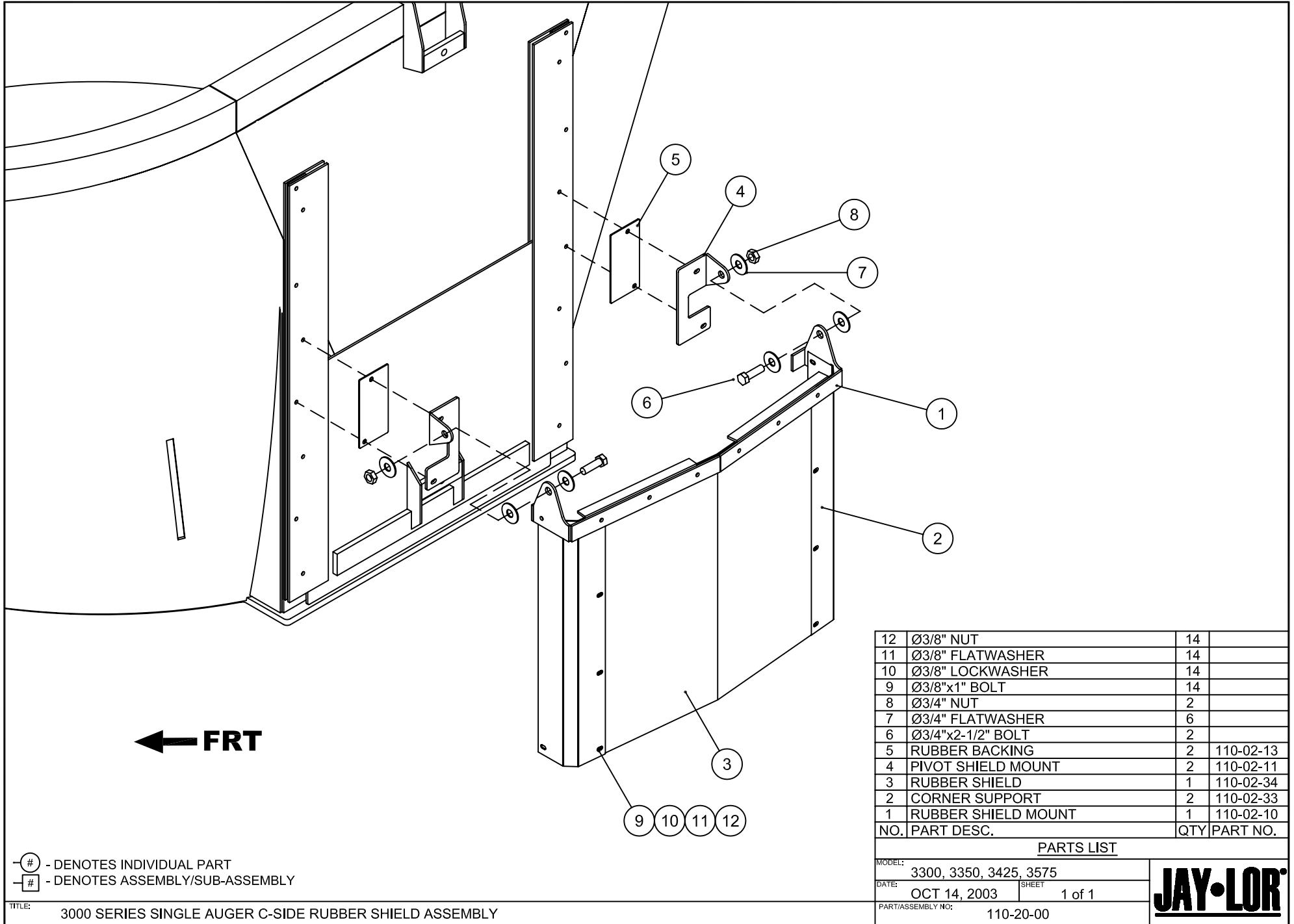
PARTS LIST

MODEL: ALL APPLICABLE
 DATE: AUG. 1/03 SHEET 1 of 1
 PART/ASSEMBLY NO: 110-20-04



⊖ (#) - DENOTES INDIVIDUAL PART
 ⊖ (#) - DENOTES ASSEMBLY/SUB-ASSEMBLY

TITLE: 3000 SERIES REAR DOOR SHIELD ASSEMBLY



12	Ø3/8" NUT	14	
11	Ø3/8" FLATWASHER	14	
10	Ø3/8" LOCKWASHER	14	
9	Ø3/8"x1" BOLT	14	
8	Ø3/4" NUT	2	
7	Ø3/4" FLATWASHER	6	
6	Ø3/4"x2-1/2" BOLT	2	
5	RUBBER BACKING	2	110-02-13
4	PIVOT SHIELD MOUNT	2	110-02-11
3	RUBBER SHIELD	1	110-02-34
2	CORNER SUPPORT	2	110-02-33
1	RUBBER SHIELD MOUNT	1	110-02-10
NO.	PART DESC.	QTY	PART NO.

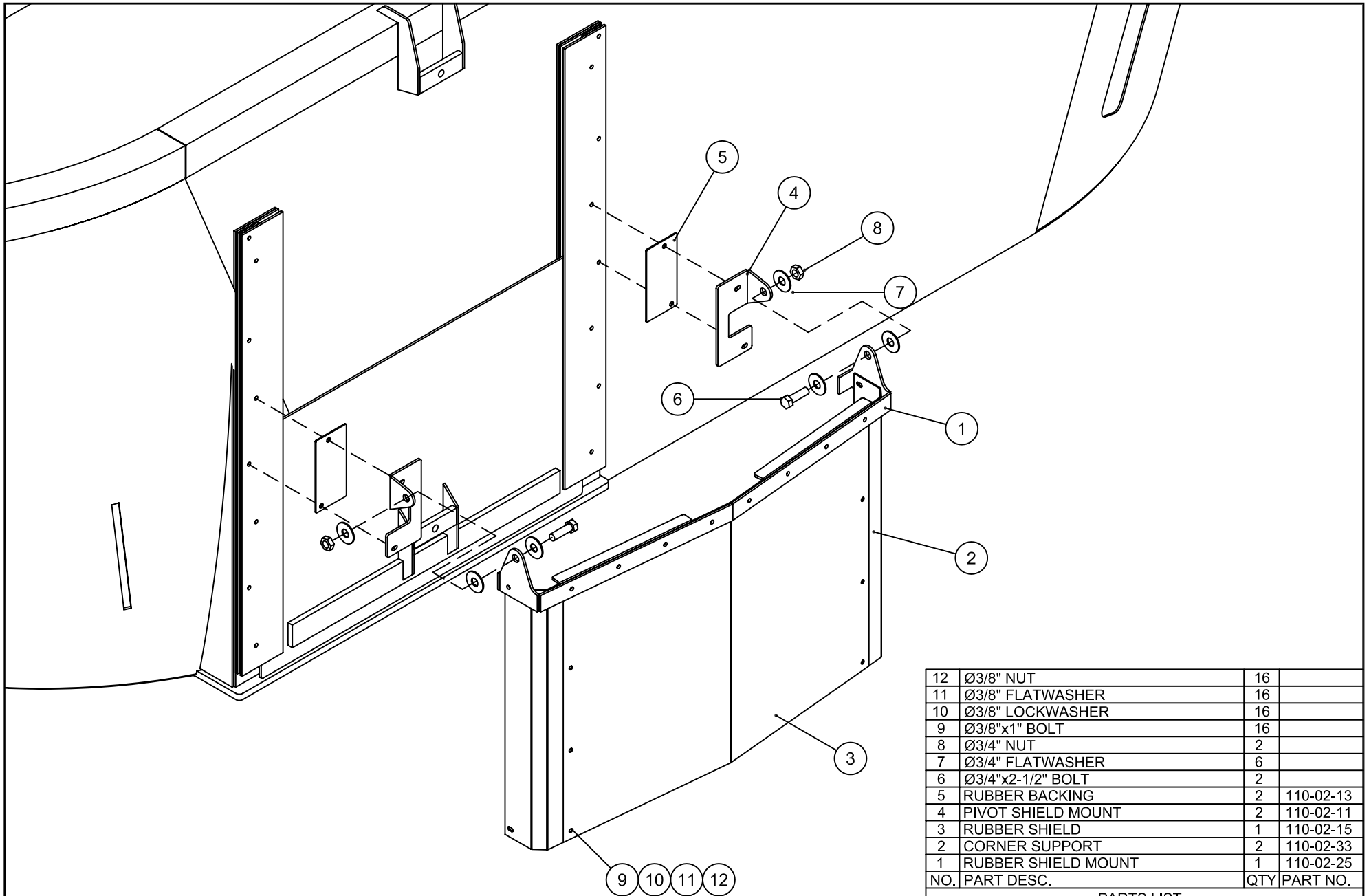
PARTS LIST

MODEL:	3300, 3350, 3425, 3575	
DATE:	OCT 14, 2003	SHEET 1 of 1
PART/ASSEMBLY NO:	110-20-00	



⊖ - DENOTES INDIVIDUAL PART
 ⊞ - DENOTES ASSEMBLY/SUB-ASSEMBLY

TITLE: 3000 SERIES SINGLE AUGER C-SIDE RUBBER SHIELD ASSEMBLY



⊖# - DENOTES INDIVIDUAL PART
 ⊖# - DENOTES ASSEMBLY/SUB-ASSEMBLY

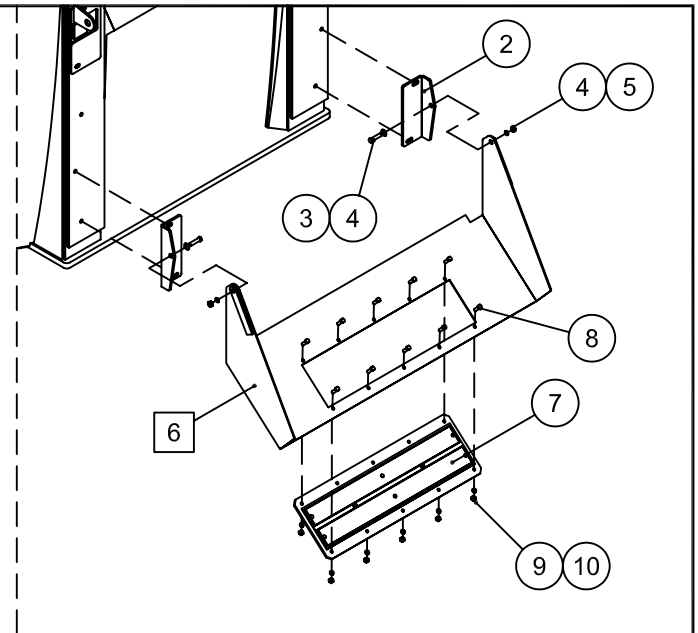
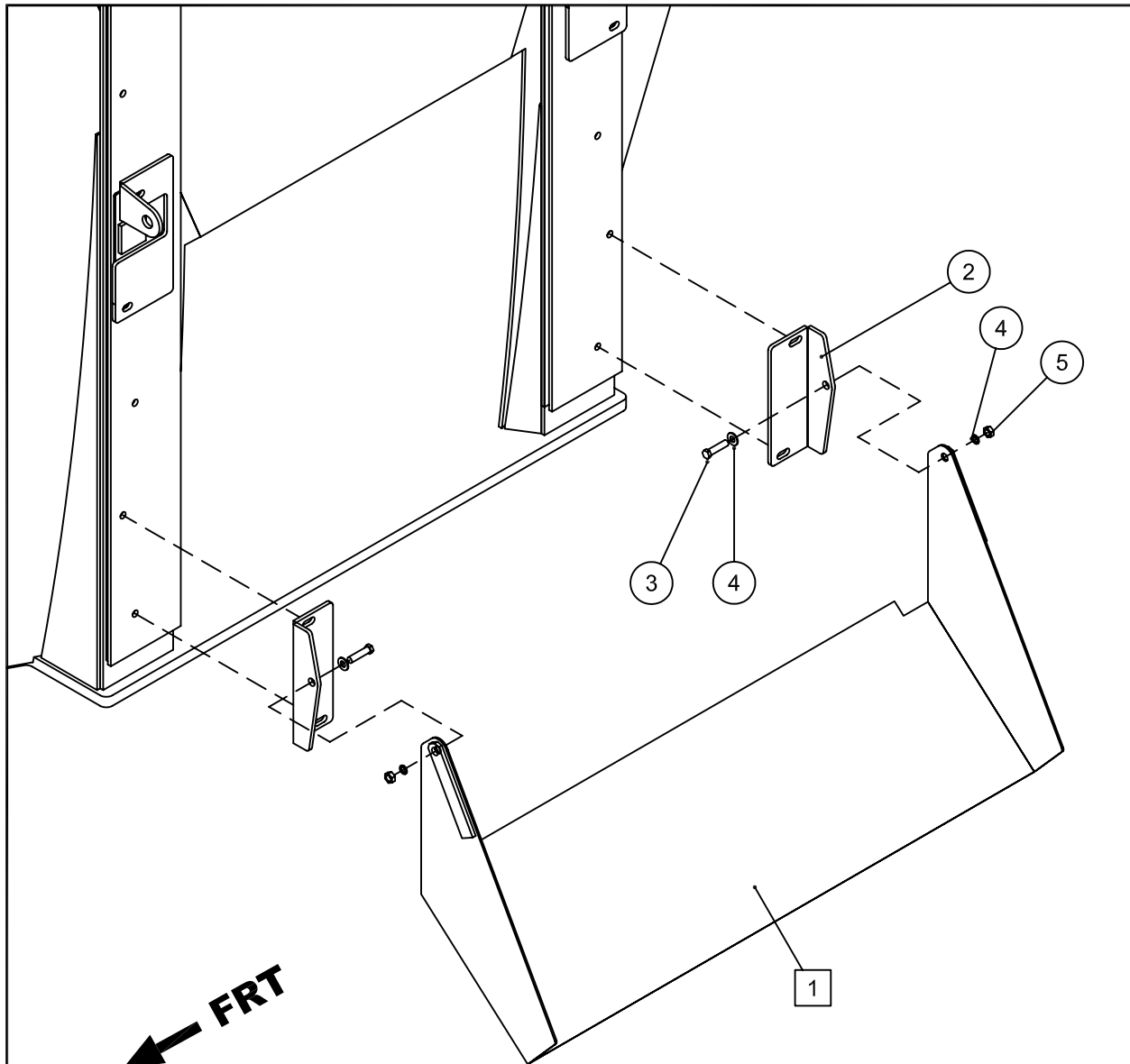
12	Ø3/8" NUT	16	
11	Ø3/8" FLATWASHER	16	
10	Ø3/8" LOCKWASHER	16	
9	Ø3/8"x1" BOLT	16	
8	Ø3/4" NUT	2	
7	Ø3/4" FLATWASHER	6	
6	Ø3/4"x2-1/2" BOLT	2	
5	RUBBER BACKING	2	110-02-13
4	PIVOT SHIELD MOUNT	2	110-02-11
3	RUBBER SHIELD	1	110-02-15
2	CORNER SUPPORT	2	110-02-33
1	RUBBER SHIELD MOUNT	1	110-02-25
NO.	PART DESC.	QTY	PART NO.

PARTS LIST

MODEL: 3650, 3750
 DATE: OCT 14, 2003 SHEET 1 of 1
 PART/ASSEMBLY NO: 110-20-02



TITLE: 3000 SERIES TWIN AUGER C-SIDE RUBBER SHIELD ASSEMBLY

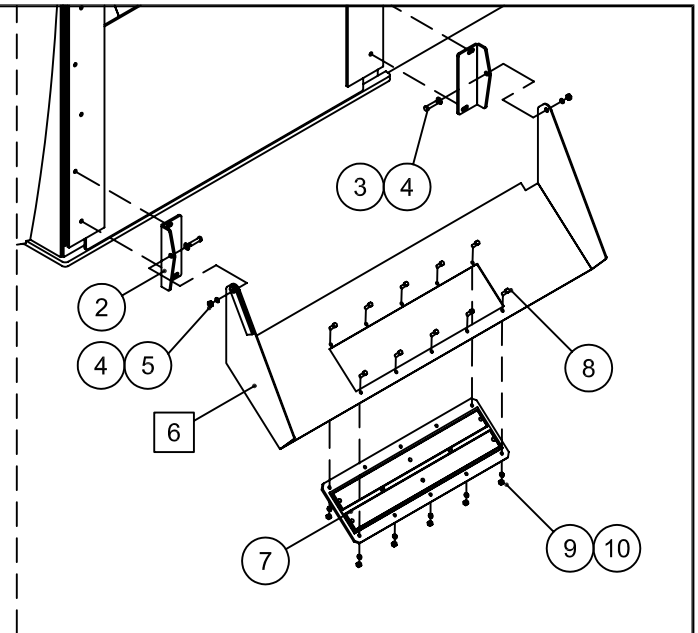
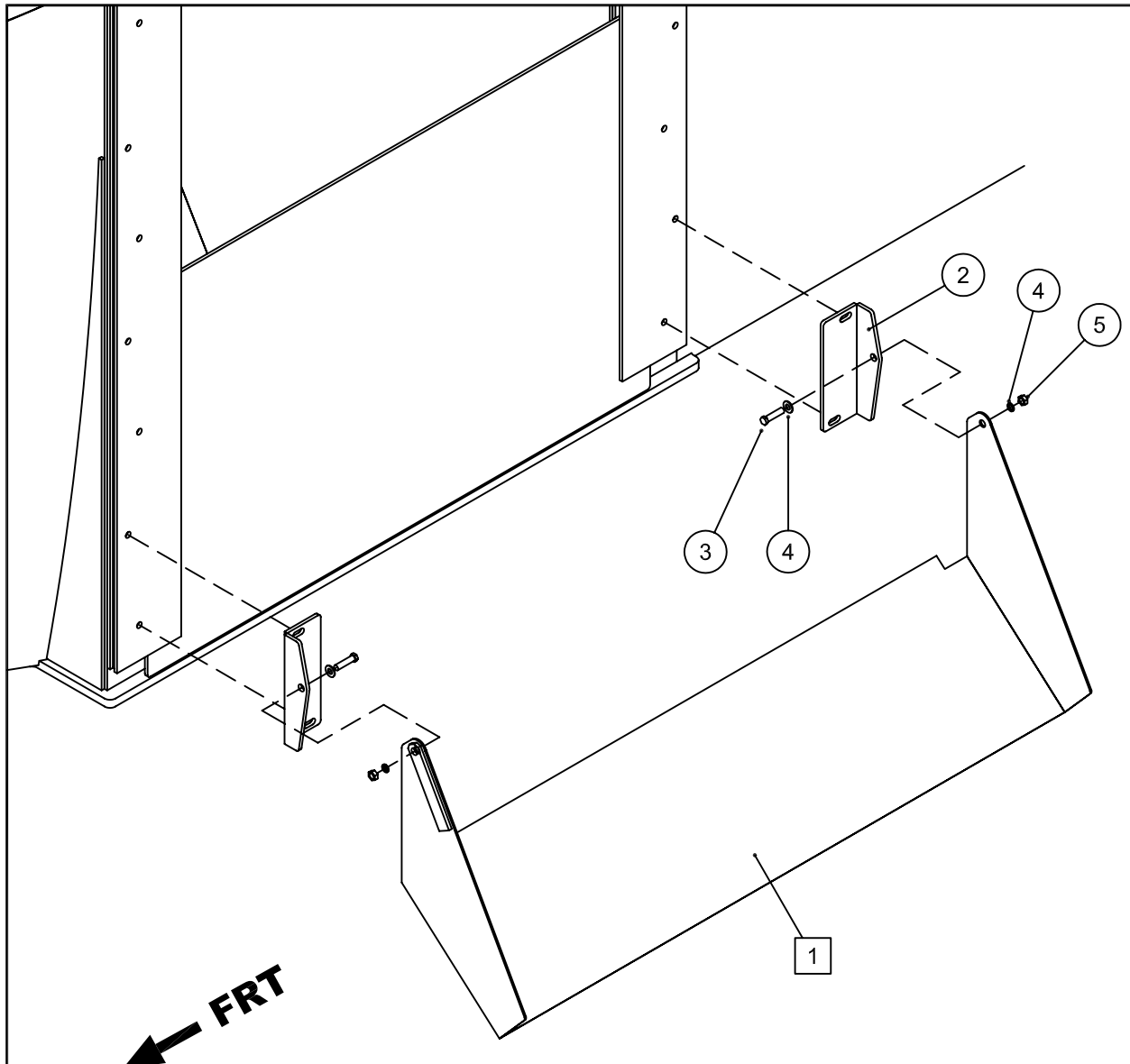


10	Ø5/16" NUT	10	
9	Ø5/16" LOCKWASHER	10	
8	Ø5/16"x1" BOLT	10	
7	MAGNET	1	060-12-03
6	CHUTE ASSEMBLY (W/ MAGNET)	1	110-20-11
5	Ø3/8" LOCKNUT	2	
4	Ø3/8" FLATWASHER	4	
3	Ø3/8"x2" BOLT	2	
2	CHUTE PIVOT	2	110-02-17
NO. PART DESC.		QTY	PART NO.
PART/ASSEMBLY NO: 110-20-10		PARTS LIST - W/ MAGNET OPTION	

5	Ø3/8" LOCKNUT	2	
4	Ø3/8" FLATWASHER	4	
3	Ø3/8"x2" BOLT	2	
2	CHUTE PIVOT	2	110-02-17
1	CHUTE ASSEMBLY (W/O MAGNET)	1	110-20-07
NO. PART DESC.		QTY	PART NO.
		PARTS LIST - W/O MAGNET OPTION	

⊖# - DENOTES INDIVIDUAL PART
 ⊖# - DENOTES ASSEMBLY/SUB-ASSEMBLY





10	Ø5/16" NUT	10	
9	Ø5/16" LOCKWASHER	10	
8	Ø5/16"x1" BOLT	10	
7	MAGNET	1	060-12-03
6	CHUTE ASSEMBLY (W/ MAGNET)	1	110-20-15
5	Ø3/8" LOCKNUT	2	
4	Ø3/8" FLATWASHER	4	
3	Ø3/8"x2" BOLT	2	
2	CHUTE PIVOT	2	110-02-17
NO. PART DESC.		QTY	PART NO.
PART/ASSEMBLY NO: 110-20-14		PARTS LIST - W/ MAGNET OPTION	

5	Ø3/8" LOCKNUT	2	
4	Ø3/8" FLATWASHER	4	
3	Ø3/8"x2" BOLT	2	
2	CHUTE PIVOT	2	110-02-17
1	CHUTE ASSEMBLY (W/O MAGNET)	1	110-20-13
NO. PART DESC.		QTY	PART NO.
		PARTS LIST - W/O MAGNET OPTION	

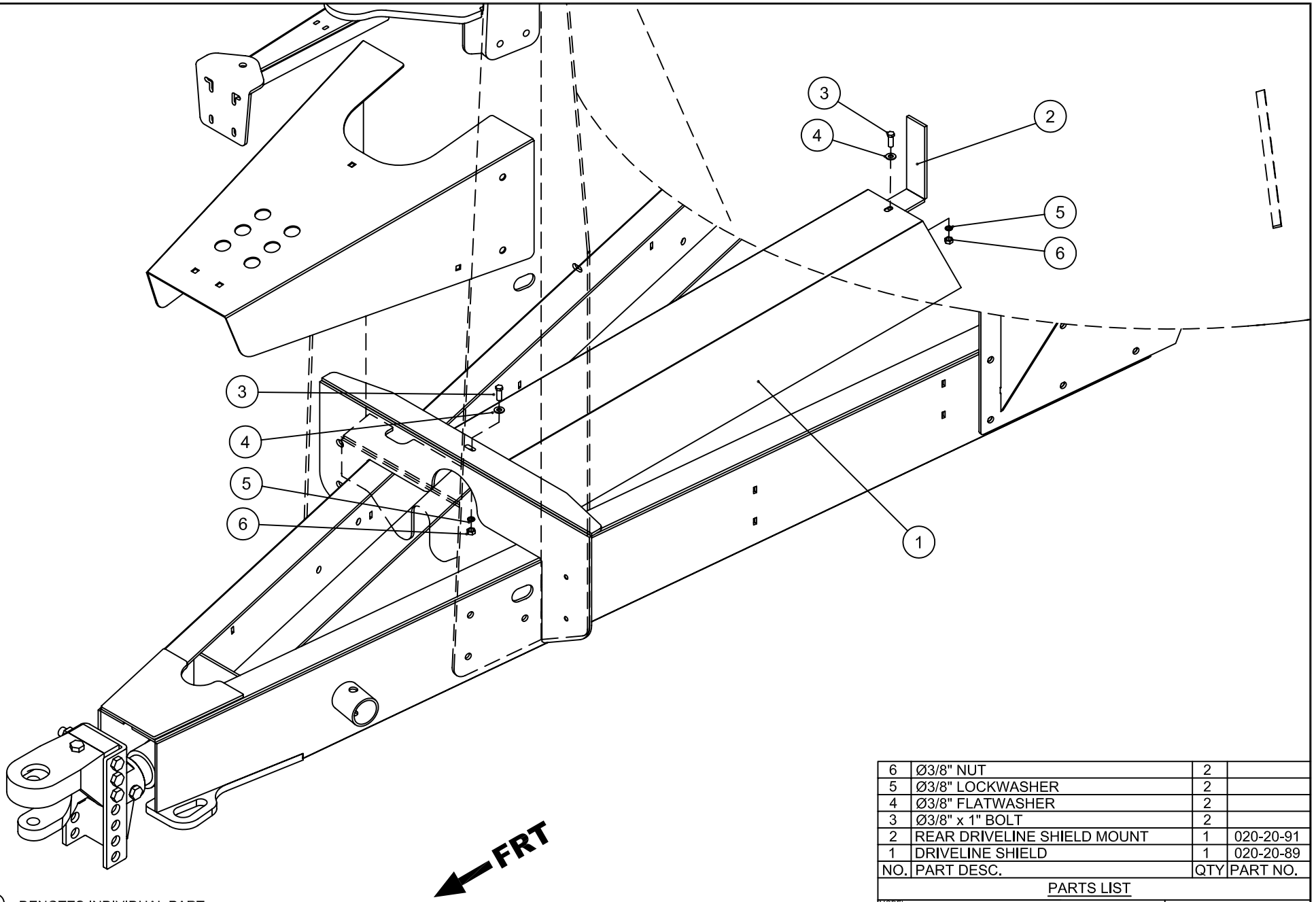
⊖# - DENOTES INDIVIDUAL PART
 ⊖# - DENOTES ASSEMBLY/SUB-ASSEMBLY

TITLE: 3000 SERIES TWIN AUGER C-SIDE DISCHARGE CHUTE OPTIONS

FILENAME: 110-20-12 & 14.DWG

MODEL: ALL APPLICABLE
 DATE: AUG. 1/03 SHEET 1 of 1
 PART/ASSEMBLY NO: 110-20-12





⊖# - DENOTES INDIVIDUAL PART
 ⊖# - DENOTES ASSEMBLY/SUB-ASSEMBLY

6	Ø3/8" NUT	2	
5	Ø3/8" LOCKWASHER	2	
4	Ø3/8" FLATWASHER	2	
3	Ø3/8" x 1" BOLT	2	
2	REAR DRIVELINE SHIELD MOUNT	1	020-20-91
1	DRIVELINE SHIELD	1	020-20-89
NO.	PART DESC.	QTY	PART NO.

PARTS LIST

MODEL:		ALL APPLICABLE	
DATE:	AUG 1/03	SHEET	1 of 1
PART/ASSEMBLY NO:		110-20-08	



TITLE: 3000 SERIES STANDARD DRIVELINE SHIELD PACKAGE FOR CENTER-SIDE DOOR DISCHARGE